



**Pemberton Serena, Seaview Holiday Park St John's Road, Whitstable, CT5 2RY**  
**£79,995**





## Pemberton Serena, Seaview Holiday Park St John's Road, Whitstable, CT5 2RY

Why wait in airport queues when you can escape to the coast whenever you choose? The 2021 Pemberton Serena offers the freedom to holiday more often throughout the owners' season — all from the comfort of your own beautifully designed villa in Whitstable.

Spacious at 42ft x 13ft and sleeping up to six, the Serena combines modern elegance with homely comfort, making it ideal for families or those who love to entertain by the sea. Stylish, Spacious & Designed for Relaxation

Step inside to a light and airy open-plan living area, complete with a free-standing suite and electric fire — perfect for cosy evenings after coastal walks. French doors invite natural light to fill the space while creating a seamless flow to the outdoors.

The fully fitted kitchen includes a cooker and fridge freezer, alongside a generous dining table and chairs for relaxed family meals.

The master bedroom benefits from an en-suite shower, while two additional bedrooms and a modern family bathroom with bath ensure comfort and privacy for all guests.

With double glazing and central heating, plus a pitched tiled roof for added style and durability, this villa is designed for year-round enjoyment.



## Description

### Why Choose Seaview?

Located on the stunning Kent coastline between Whitstable and Herne Bay, Seaview Holiday Park offers a welcoming, family-friendly environment surrounded by miles of sandy coastal footpaths — ideal for walkers, cyclists, and pet owners alike.

Here, you're not just purchasing a holiday home — you're investing in spontaneous weekends away, seaside sunsets, and the freedom to escape whenever you choose.

The Pemberton Serena makes coastal ownership effortless, stylish, and ready to enjoy.

Discover the Location: Coastal Living at Seaview  
Perfectly positioned on St Johns Road, Whitstable, Kent, Seaview Holiday Park enjoys one of the most desirable stretches of the North Kent coastline. Nestled between the charming seaside town of Whitstable and the traditional coastal resort of Herne Bay, this location blends tranquil coastal scenery with vibrant seaside culture.

### Location

A Coastline Made for Exploring

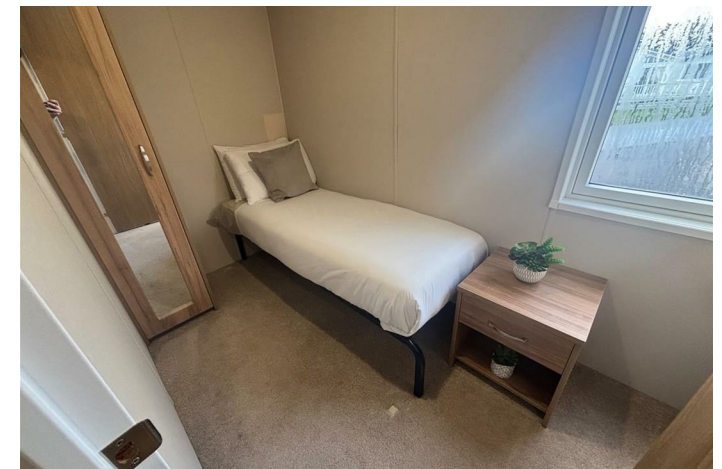
Step outside your holiday home and discover miles of scenic coastal footpaths, sandy stretches, and sea-view promenades. The area is ideal for morning walks, cycling adventures, dog-friendly outings, and sunset strolls along the shoreline. The fresh sea air and open landscapes create the perfect backdrop for relaxation and wellbeing.

### The Charm of Whitstable

Whitstable is famed for its working harbour, colourful beach huts, independent boutiques, and award-winning seafood restaurants. From artisan cafés to traditional pubs overlooking the sea, it offers a lively yet laid-back atmosphere all year round. Seasonal events and local markets give the town a welcoming community feel that keeps visitors returning time and again.

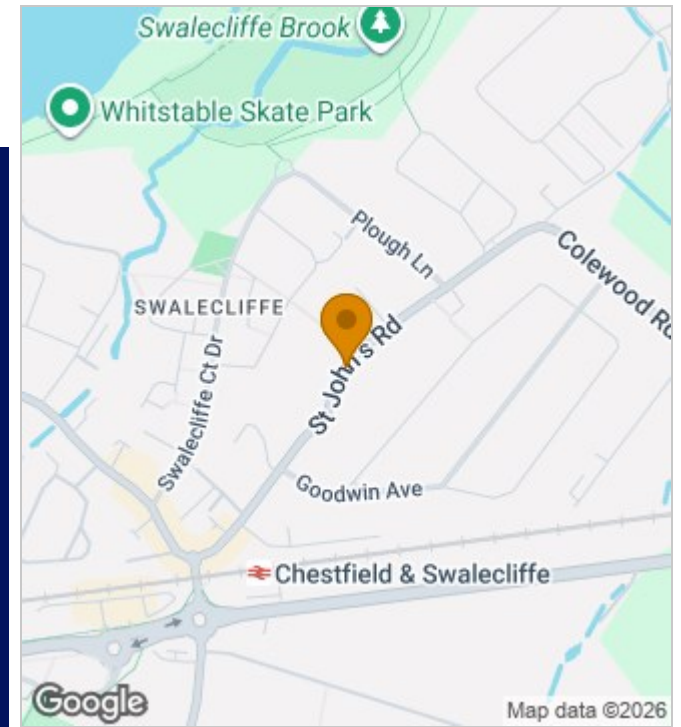
### Convenient Yet Peaceful

Despite its serene coastal setting, Seaview Holiday Park is easily accessible from major road links, making weekend escapes effortless. Nearby transport connections also provide convenient access to Canterbury and even London, meaning you can enjoy peaceful coastal living without feeling disconnected.



PARK HOLIDAYS

# FREE 2026 & 2027 Pitch Fees



## Energy Efficiency Rating

	Current	Potential
Very energy efficient - lower running costs		
(92 plus) <b>A</b>		
(81-91) <b>B</b>		
(69-80) <b>C</b>		
(55-68) <b>D</b>		
(39-54) <b>E</b>		
(21-38) <b>F</b>		
(1-20) <b>G</b>		
Not energy efficient - higher running costs		
<b>England &amp; Wales</b>	EU Directive 2002/91/EC	

190 High Street, Herne Bay, Kent, CT6 5AP  
Tel: 01227 949291 | Email: [sales@zesthomes.uk](mailto:sales@zesthomes.uk)  
[www.zesthomes.uk](http://www.zesthomes.uk)

1. Money Laundering Regulations: Please note all sellers and intended purchasers will receive an 'On Boarding' link to verify their identity. This is a legal requirement prior to a sale or purchase proceeding.
2. All measurements stated on our details and floorplans are approximate and as such can not be relied upon and do not form part of any contracts.
3. Zest Homes have not tested any services, equipment or appliances and it is therefore the responsibility of any buyer/tenant to do so.
4. Photographs and marketing material are produced as a guide only and legal advice should be sought to verify fixtures and fittings, planning, alterations and lease details.
5. Zest Homes hold the copyright to all advertising material used to market this property.